



**Welcome  
to your  
launchpad.**



OLIVSEATTLE.COM



## START SOMETHING

This is where it all begins. Where so many dreams have started and dreamers have made good. All fueled by a powerful mix of nature and culture. Rawness and refinement. Cacophony and melody. Now it's your turn. ōLiv Seattle's fusion of grit and groove immerses you in the vibrant, verdant splendor of the Pacific Northwest. It's where you can tap all the Emerald City has to offer—inspiration, creativity, and opportunity. Then recharge and do it all over again. It won't be easy—but it'll be so worth it. Starting your own thing always is.











# Amenities

---

## ROOFTOP POOL DECK:

- Sundeck with Pool and Built-in Seating
- Outdoor Lounge with Built-in Seating, BBQ Area and Fire Pits

## HEALTH + WELLNESS

- Fitness Center with State-of-the-Art Equipment
- Yoga Room
- Spa with Indoor & Outdoor Sauna

## WORK + STUDY

- Rooftop Clubroom with TVs, Lounge Space
- Executive Business Area with Macs, PCs & Printers
- Outdoor Private Study Terrace
- Retail space with Coffee Bar

## TECHNOLOGY + SECURITY

- Controlled Access and Key FOB System Throughout
- Limited Assigned Parking Available in Climate & Access Controlled Garage
- Free, Secured, Indoor Bike Storage
- Free High Speed Wi-Fi Throughout the Building

Amenities and features subject to change without notice.





# Features

## SHARED SPACES

- Fully Furnished with Modern, Custom-Designed Furniture
- Custom Roller Shades in Living Room
- Full-Size Washer and Dryer in Each Apartment
- 55" Smart TV in Each Living Room
- Wood-Style Flooring
- Insulated Interior Walls
- Large Openable Windows with Energy Efficient Low-E Double Pane Glass\*

## KITCHEN

- Premium Stainless Steel Range, Oven, Microwave, Dishwasher and Refrigerator
- Quartz Countertops
- Designer Cabinetry & Architectural Track Lighting in Kitchen

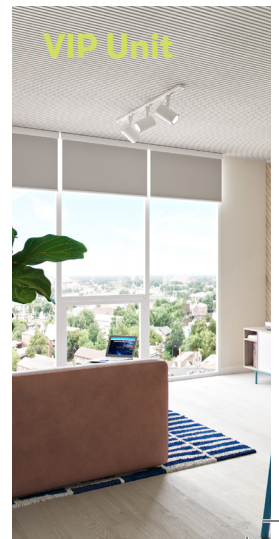
## BEDROOM

- Walk-In Closets with Built-In Closet Organizers\*
- Blackout Shades\*
- Modern Ceiling Fan with Light
- Independently Keyed Bedrooms with Solid Wood Doors

## BATHROOM

- Bluetooth Showerhead Speaker in Each Bathroom
- Walk-in Showers with Glass Enclosure\*
- High-End Plumbing Fixtures
- Ceramic Tile & Designer Custom Cabinetry

Amenities and features subject to change without notice.  
\*In select units.





# Elevate your space by upgrading your lifestyle with **ōLiv+**

## **VIP UNIT**

- Located on the Top Floor 22nd – 24th
- Floor Restricted Access
- Smart Home Technology Including
  - Amazon Echo Show
  - Smart Lighting
- Sound Bar
- Upgraded 60-65" Smart TV\*
- Custom Tile Backsplash in Kitchen
- Upgrade Cabinet and Countertops
- Panelized Built-in Dishwasher
- Upgraded Lighting Throughout
- Kohler Moxie Rainfall Bluetooth Speaker Showerhead
- Additional Shelving and Vanity Organizer in Bathrooms

Amenities and features subject to change without notice.

\*In select units.



# Take your pick.

From stylish studios to VIP suites,  
we've got a layout for every lifestyle.

## Studio

### STUDIO

Choose from: Murphy or 2, 3 or 4 Bedroom Studios

SQFT Range: 337 - 1,283

**Upgrade to a VIP unit**

## 2 BR

### TWO BEDROOMS

Choose from: One or Two Bathrooms

SQFT Range: 707 - 1,003

**Upgrade to a VIP unit**

## 3 BR

### THREE BEDROOMS

Choose from: One or Two Bathrooms

SQFT Range: 922 - 1,111

**Upgrade to a VIP unit**

## 4 BR

### FOUR BEDROOMS

Choose from: Two or Three Bathrooms

SQFT Range: 1,058-1,275

**Upgrade to a VIP unit**

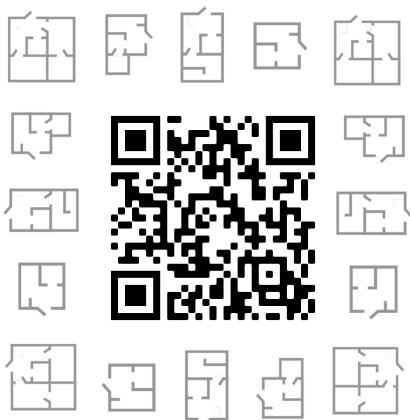
## 5 BR

### FIVE BEDROOMS

Choose from: Three or Four Bathrooms

SQFT Range: 1,372-1,550

**Upgrade to a VIP unit**



## Find your space.

Scan to browse **34** unique floor plans.

For details on additional fees, parking rates and  
other details, please see the website.

Please note floorplans may differ in range,  
square footage, and price.







# oLiv Lifestyle

## LIFESTYLE FEATURES:

- LEED Gold Building
- Serving UW-Seattle, UW- Bothell, and Seattle Pacific University
- Steps away from campus on the corner of Brooklyn Ave NE and 45th street.
- Convenient Access to Shopping, Restaurants, Nightlife, and Greek Life
- Adjacent Park Access
- On-site, Professional Management and Maintenance
- Double Occupancy\*
- Roommate Matching Available\*
- Individual Leases

\*In select units.

## MODERN COMMUNITY

oLiv is designed to build community and connections. We put you right in the center of it all, so you can explore everything the city has to offer. At oLiv, you'll build the relationships and connections that help you live your best and pursue what matters most.





## Let's chat.

**1. Property Address:**  
4515 Brooklyn Ave NE, Seattle, WA 98105

**2. Leasing Address:**  
4733 University Way NE, Seattle, WA 98105  
Mon-Fri 10-7, Sat 10-5 and Sun 1-5

Lease@OlivSeattle.com  
206-438-3029

@OlivSeattle

**olivseattle.com**

